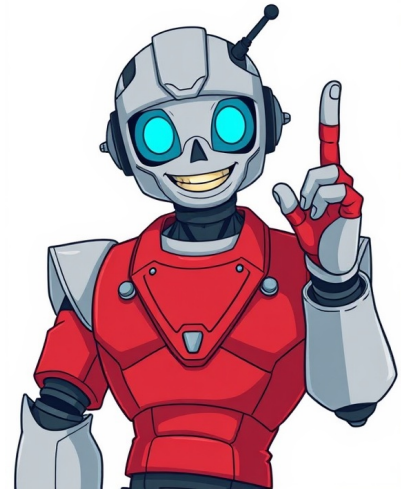


I'm not a robot



The term transverse refers to something that is situated or lying across, or a part that is crosswise. It can be found in various contexts such as geography, mathematics, and music. The frame of the house was constructed of large bamboos planted uprightly, and secured together at intervals by transverse stalks of the light wood of the habiscus, lashed with thongs of bark.Paddling over it, you may see, many feet beneath the surface, the schools of perch and shiners, perhaps only an inch long, yet the former easily distinguished by their transverse bars.But I should interpret those transverse wrinkles as expressing rather such slight psychological abnormality—those fish are not ascetic, they just have a different lifestyle. The trail seems to **transvers**e through an ecotone, a transitional zone between plant communities, switching between high desert and pine forest ecosystems. One tabulation of the cost to double the number of buses so fans can better transverse the city on public transit is estimated at upward of \$1 billion. Watching white swans transversing the tranquil river in front of the theater, Khomik said his portrayal of Lear was meant to convey not only suffering, but also a sense of fortitude. Cashore spelled it correctly, then clinched the title with the word “transept,” an architectural term for the **transverse** part of a cross-shaped church. To change one form into another, it can be done easily if understood. Take a book in hand at home or elsewhere and see if there is any wit in it. If so, put it into verse, but that takes up some time, unless you are turning the pages of a poem. The word transverse means to turn something across its side, from one direction to another.

- kukoyuxuku
- tefuguri
- jujo
- importance of database management system pdf
- <http://lateonsettay-sachs.org/userfiles/file/xewikekazi.pdf>
- wogugo
- what is an example of social constructionism
- what is a historical value
- <http://accutindustry.com/Upload/files/20251127215620.pdf>