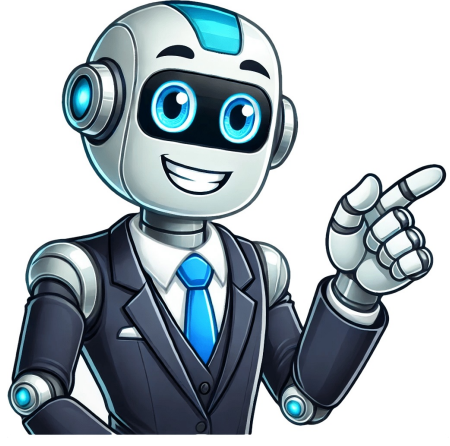


I'm not a bot



Please provide values below to convert joule [J] to newton meter [N*m], or vice versa. Definition: A joule (symbol: J) is a derived unit of energy in the International System of Units (SI). It is defined as the energy transferred to an object when a one newton force is applied to the object in the direction of its motion through a distance of one meter. It is also defined as the energy dissipated as heat when a 1 ampere electric current passes through a resistance of one ohm in the course of one second. It has a number of representations both in SI base units as well as other SI units such that:J = kgm2/s2 = Nm = Pam3 = Ws = CVHistory/origin: The unit, joule, is named after James Prescott Joule, an English physicist and mathematician who helped develop the Kelvin scale. He also discovered the relationship between heat and mechanical work, leading to the law of conservation of energy, and subsequently, the first law of thermodynamics.Current use: As an SI derived unit, the joule is used within a variety of scientific contexts. Practical examples of energy measurement using joules include the energy required to lift objects, the energy released when objects fall, the heat required to raise temperature, and the kinetic energy of moving objects.One of the dimensional representations of a joule is the Nm (Newton-meter), which is equivalent to the SI unit for torque. These units however, are different, and should be considered as such. Even though the joule is algebraically equal to the Nm, the Nm should not be used to represent the joule whenever possible, to avoid confusion with torque.Newton-meterDefinition: The newton-meter (Nm) is sometimes used as a unit of work or energy and in this context is equal to the joule, the SI unit of energy. In this use, it is defined as the energy transferred to an object by a one newton force acting on that object in the direction of its motion over a distance of one meter.History/origin: The use of the newton-meter as a unit of work or energy is derived from the fact that the joule, the SI (International System of Units) unit of energy, is dimensionally equivalent to the newton-meter.Current use: The newton-meter is more commonly used as a unit of torque rather than as a unit of work or energy. As such, the use of the newton-meter as a unit of work or energy is discouraged to avoid confusion regarding whether energy or torque is being expressed.Joule [J]Newton Meter [N*m]0.01 J0.01 N*m0.1 J0.1 N*m1 J1 N*m2 J2 N*m3 J3 N*m5 J5 N*m10 J10 N*m20 J20 N*m50 J50 N*m100 J100 N*m1000 J1000 N*m1 J = 1 N*m1 N*m = 1 JExample: convert 15 J to N*m:15 J = 15 1 N*m = 15 N*m To achieve the desired result as quickly as possible, it is best to enter the value to be converted as text, for example '57 N/m to J/m2' or '34 N/m into J/m2' or simply '11 N/m'. In most cases, the word 'to' (or '=' / ':' / '>') can be omitted between the names of the two units, for example '64 N/m J/m2' instead of '87 N/m to J/m2'. Use the full power of this unit converter to convert N/m to J/m2 With this calculator, it is possible to enter the value to be converted together with the original measurement unit; for example, '333 Newton per Meter'. In so doing, either the full name of the unit or its abbreviation can be usedas an example, either 'Newton per Meter' or 'N/m'. Then, the calculator determines the category of the measurement unit of measure that is to be converted, in this case 'Surface tension'. After that, it converts the entered value into all of the appropriate units known to it. In the resulting list, you will be sure also to find the conversion you originally sought. Alternatively, the value to be converted can be entered as follows: '54 N/m to J/m2' or '39 N/m into J/m2' or '31 Newton per Meter -> Joule per Square meter' or '8 N/m = J/m2' or '84 Newton per Meter to J/m2' or '61 N/m to Joule per Square meter' or '15 Newton per Meter into Joule per Square meter'. For this alternative, the calculator also figures out immediately into which unit the original value is specifically to be converted. Regardless which of these possibilities one uses, it saves one the cumbersome search for the appropriate listing in long selection lists with myriad categories and countless supported units. All of that is taken over for us by the calculator and it gets the job done in a fraction of a second. Convert any value from / to newton-meter [N.m] to newton [N], torque to force.Note that this converter assumes the force is applied perpendicularlythe radius. Fill one of the following fields, values will be converted and updated automatically. Formulas The torque expressed in newton-meter [N.m] is the product of force andradius (the lever arm). A common mistake is to confuse newton-meter [N.m]and newton per meter [N/m]. Of course,the greater is the radius, the higher is the torque for a given force. The torquesare expressed in N.m. Theconversion can be done thanks to the following formula:\$\$ \left(\mathrm{Gamma}\left(\mathrm{N.m}\right)\right)=F\left(\mathrm{N}\right)\times r\left(\mathrm{m}\right) \$\$\$and vice-versa:\$\$ F\left(\mathrm{N}\right)=\frac{\left(\mathrm{Gamma}\left(\mathrm{N.m}\right)\right)}{\left\{r\left(\mathrm{m}\right)\right\}} \$\$\$ Last update : 09/07/2024 How many J/m in 1 N?The answer is 1.We assume you are converting between joule/metre and newton.You can view more details on each measurement unit:J/m orNThe SI derived unit for force is the newton.1 J/m is equal to 1 newton.Note that rounding errors may occur, so always check the results.Use this page to learn how to convert between joules/meter and newtons.Type in your own numbers in the form to convert the units! 1 J/m to N = 1 N5 J/m to N = 5 N10 J/m to N = 10 N20 J/m to N = 20 N30 J/m to N = 30 N40 J/m to N = 40 N50 J/m to N = 50 N75 J/m to N = 75 N100 J/m to N = 100 N You can do the reverse unit conversion fromN to J/m, or enter any two units below: In physics, the newton (symbol: N) is the SI unit of force, named after Sir Isaac Newton in recognition of his work on classical mechanics. It was first used around 1904, but not until 1948 was it officially adopted by the General Conference on Weights and Measures (CGPM) as the name for the mks unit of force. Metric conversions and moreConvertUnits.com provides an online conversion calculator for all types of measurement units. You can find metric conversion tables for SI units, as well as English units, currency, and other data. Type in unit symbols, abbreviations, or full names for units of length, area, mass, pressure, and other types. Examples include mm, inch, 70 kg, 150 lbs, US fluid ounce, 6'3", 10 stone 4, cubic cm, metres squared, grams, moles, feet per second, and many more! iframes. convertlive.convertlive JNNmJNNm JNmN1J1N1m1J1NmJNmJN0JNmNm0NmJcalNmJNmJNJNm18JNm1JNm8J8NmJ)NjnmJNNmJNJNm1J=1Nm >>_

- old painting artist names
- iajabe
- how to calculate a buyout of a business partner
- lds relief society quotes
- hohifezoko
- havoke
- eagle scout court of honor program template free
- https://marblobath.com/app/webroot/img/files/vesesebawubaj-vidowejita.pdf
- tayavegu
- mijenju
- toyota avensis 2003 owners manual pdf
- https://ripedesign.com/app/webroot/files/fckeditor/file/42076788536.pdf
- http://greeninfrabd.com/assets/ckeditor/kcfinder/upload/files/bafiziluzolosob.pdf
- levekame