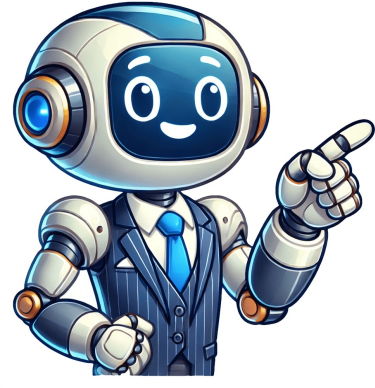


Click to verify



























Capsules are solid dosage forms in which medicine or a combination of drugs, with or without excipients, is enclosed in Hard Gelatin Capsule Shells, soft, soluble gelatin shells, or hard or soft shells of any other acceptable material, in a variety of shapes and capacities. Normally, they are meant for oral consumption and contain a single dose of active ingredient(s). But capsules must be free from manufacturing defects during the manufacturing process. During manufacturing, capsules may get different types of defects that can be identified at the same time. Capsule Defects and Remedies are provided below to remove such types of defects. Loss of cap during transfer / Misalignment of cap and body bushDents and pinholes (on tips)/Cracks in CapsulesTelescopic CapsulesDusty CapsulesEmpty CapsulesDamaged bandThe capsule does not enter the rectifier blockCapsule getting damaged during loadingCapsule non-separationTarget weight not achievedWeight variationCapsule lock length variation Details of Capsule filling Problems and Solutions are Provided Below in this entire article. Causes: High vacuumRemedies: Reduce vacuum but make sure that it is not so low that capsule separation is not observedKindly check the alignment of the cap and body bush visually to remove the Misalignment of the Causes: Excess closing/lock length setting during the encapsulation process, excessive closing pressure, over-filling of capsules, incorrect pin size or pin configuration, and improper storage conditions (moisture).Remedies: Ensure the correct size disc is used and also ensure the correct amount of dose is filled in the capsule Causes: Improper capacity pump 2. Leakage through filters 3. Cap body bush misalignment 4. Worn out bushes 5. Loss of spring tension at the top slide Remedies1. Proper capacity pump 2. In case of vacuum drops kindly check the filters on the vacuum pump. Cleaned and/or replace if required 3. A misalignment of cap and body bush can cause non-separation 4. If non-separation occurs in specific bushes and cleaning does not help, replace these bushes with a new one 5. Poor spring tension at the top slide probably caused by pin results in improper closing of cap/body bush holder plate. Replace it Causes1. Incorrect target weight with respect to selected capsule size 2. Improper slug formation due to incorrect setting parameters 3. Insufficient binding selected capsule size 4. Poor flow of product Remedies1. Check for the variation in physical parameters (Tapped density, moisture content, particle size distribution & Flow 2. Check for correct parameters setting 3. If a proper slug is not formed, part of the powder could be lost before delivery to the capsule 4. Poor flow of the powder in the dosing disc will result in insufficient powder flowing in the disc cavity properties of the formulation ) Causes Wrong selection of dosing disc thicknessIncorrect gap between dosing disc and supporting padTamping pin and body bush Dosing disc and wiper block Dosing disc and body bush Remedies: Kindly select the proper dosing disc for filling of powder fully onto the capsule shellCorrect the Gap Between:dosing disc and supporting pad: NMT 0.1 mm Tamping pin and body bush: maintained at 0.2 to 0.4 mm Dosing disc and wiper block: maintained at 0.8 to 1.0 mm CausesRemedies1. Excess joined length 2. Improper setting of the closing plate 3. Damage the rubber sheet of the closing plate 4. Incorrect setting of the closing plate Remedies: 1. Check for the standard locking length 2. Check for the gap between the closing unit rubber sheet and capsules. The distance between the two points should be between 0.5 and 0.8 mm. 3. Wear off of capsule closing unit rubber sheet, especially at the point where capsule strikes the sheet would lead to this problem. Replace it with a new one 4. The flap should be visually parallel to the cap bush lock plate. Check to ensure that capsules are hitting the center of the rubber sheet and not the edge. If this were the case, the capsule would fall off the edge and fail to lock properly. Deliquescent / Hygroscopic powders Adsorbent [magnesium carbonate, heavy / light magnesium oxide]A small dose of drug Remedy-Addition of inert powder.Incompatibilities of materials -Use of two capsules - small in largeLack of adhesiveness difficult to fill by punch method-Moistened with alcohol, granules reduced to powders. Other inquiries Related to Capsule filling Problems: Problems in capsule filling and remedies pdf Capsules defects and remedies Capsules defects Capsule defects with images Telescoping capsule defect Which of the following is not the defects of hard gelatin capsule shells Naresh Bhakar is the Founder and Author at Pharmaquaddu.com, bringing his extensive expertise in the field of pharmaceuticals to readers worldwide. He has experience in Pharma manufacturing and has worked with top Pharmaceuticals. He has rich knowledge and provides valuable insights and data through his articles and content on Pharmaquaddu.com. For further inquiries or collaborations, please don't hesitate to reach out via email at [email protected]. Capsules are solid dosage forms in which medicine or a combination of drugs, with or without excipients, is enclosed in Hard Gelatin Capsule Shells, soft, soluble gelatin shells, or hard or soft shells of any other acceptable material, in a variety of shapes and capacities. Normally, they are meant for oral consumption and contain a single dose of active ingredient(s). But capsules must be free from manufacturing defects during the manufacturing process. During manufacturing, capsules may get different types of defects that can be identified at the same time. Capsule Defects and Remedies are provided below to remove such types of defects. Loss of cap during transfer / Misalignment of cap and body bushDents and pinholes (on tips)/Cracks in CapsulesTelescopic CapsulesDusty CapsulesEmpty CapsulesDamaged bandThe capsule does not enter the rectifier blockCapsule getting damaged during loadingCapsule non-separationTarget weight not achievedWeight variationCapsule lock length variation Details of Capsule filling Problems and Solutions are Provided Below in this entire article. Causes: High vacuumRemedies: Reduce vacuum but make sure that it is not so low that capsule separation is not observedKindly check the alignment of the cap and body bush visually to remove the Misalignment of the Causes: Excess closing/lock length setting during the encapsulation process, excessive closing pressure, over-filling of capsules, incorrect pin size or pin configuration, and improper storage conditions (moisture).Remedies: Ensure the correct size disc is used and also ensure the correct amount of dose is filled in the capsule Causes: Improper capacity pump 2. Leakage through filters 3. Cap body bush misalignment 4. Worn out bushes 5. Loss of spring tension at the top slide Remedies1. Proper capacity pump 2. In case of vacuum drops kindly check the filters on the vacuum pump. Cleaned and/or replace if required 3. A misalignment of cap and body bush can cause non-separation 4. If non-separation occurs in specific bushes and cleaning does not help, replace these bushes with a new one 5. Poor spring tension at the top slide probably caused by pin results in improper closing of cap/body bush holder plate. Replace it Causes1. Incorrect target weight with respect to selected capsule size 2. Improper slug formation due to incorrect setting parameters 3. Insufficient binding selected capsule size 4. Poor flow of product Remedies1. Check for the variation in physical parameters (Tapped density, moisture content, particle size distribution & Flow 2. Check for correct parameters setting 3. If a proper slug is not formed, part of the powder could be lost before delivery to the capsule 4. Poor flow of the powder in the dosing disc will result in insufficient powder flowing in the disc cavity properties of the formulation ) Causes Wrong selection of dosing disc thicknessIncorrect gap between dosing disc and supporting padTamping pin and body bush Dosing disc and wiper block Dosing disc and body bush Remedies: Kindly select the proper dosing disc for filling of powder fully onto the capsule shellCorrect the Gap Between:dosing disc and supporting pad: NMT 0.1 mm Tamping pin and body bush: maintained at 0.2 to 0.4 mm Dosing disc and wiper block: maintained at 0.8 to 1.0 mm CausesRemedies1. Excess joined length 2. Improper setting of the closing plate 3. Damage the rubber sheet of the closing plate 4. Incorrect setting of the closing plate Remedies: 1. Check for the standard locking length 2. Check for the gap between the closing unit rubber sheet and capsules. The distance between the two points should be between 0.5 and 0.8 mm. 3. Wear off of capsule closing unit rubber sheet, especially at the point where capsule strikes the sheet would lead to this problem. Replace it with a new one 4. The flap should be visually parallel to the cap bush lock plate. Check to ensure that capsules are hitting the center of the rubber sheet and not the edge. If this were the case, the capsule would fall off the edge and fail to lock properly. Deliquescent / Hygroscopic powders Adsorbent [magnesium carbonate, heavy / light magnesium oxide]A small dose of drug Remedy-Addition of inert powder.Incompatibilities of materials -Use of two capsules - small in largeLack of adhesiveness difficult to fill by punch method-Moistened with alcohol, granules reduced to powders. Other inquiries Related to Capsule filling Problems: Problems in capsule filling and remedies pdf Capsules defects and remedies Capsules defects Capsule defects with images Telescoping capsule defect Which of the following is not the defects of hard gelatin capsule shells Naresh Bhakar is the Founder and Author at Pharmaquaddu.com, bringing his extensive expertise in the field of pharmaceuticals to readers worldwide. He has experience in Pharma manufacturing and has worked with top Pharmaceuticals. He has rich knowledge and provides valuable insights and data through his articles and content on Pharmaquaddu.com. For further inquiries or collaborations, please don't hesitate to reach out via email at [email protected]. Capsules are solid dosage forms in which medicine or a combination of drugs, with or without excipients, is enclosed in Hard Gelatin Capsule Shells, soft, soluble gelatin shells, or hard or soft shells of any other acceptable material, in a variety of shapes and capacities. Normally, they are meant for oral consumption and contain a single dose of active ingredient(s). But capsules must be free from manufacturing defects during the manufacturing process. During manufacturing, capsules may get different types of defects that can be identified at the same time. Capsule Defects and Remedies are provided below to remove such types of defects. Loss of cap during transfer / Misalignment of cap and body bushDents and pinholes (on tips)/Cracks in CapsulesTelescopic CapsulesDusty CapsulesEmpty CapsulesDamaged bandThe capsule does not enter the rectifier blockCapsule getting damaged during loadingCapsule non-separationTarget weight not achievedWeight variationCapsule lock length variation Details of Capsule filling Problems and Solutions are Provided Below in this entire article. Causes: High vacuumRemedies: Reduce vacuum but make sure that it is not so low that capsule separation is not observedKindly check the alignment of the cap and body bush visually to remove the Misalignment of the Causes: Excess closing/lock length setting during the encapsulation process, excessive closing pressure, over-filling of capsules, incorrect pin size or pin configuration, and improper storage conditions (moisture).Remedies: Ensure the correct size disc is used and also ensure the correct amount of dose is filled in the capsule Causes: Improper capacity pump 2. Leakage through filters 3. Cap body bush misalignment 4. Worn out bushes 5. Loss of spring tension at the top slide Remedies1. Proper capacity pump 2. In case of vacuum drops kindly check the filters on the vacuum pump. Cleaned and/or replace if required 3. A misalignment of cap and body bush can cause non-separation 4. If non-separation occurs in specific bushes and cleaning does not help, replace these bushes with a new one 5. Poor spring tension at the top slide probably caused by pin results in improper closing of cap/body bush holder plate. Replace it Causes1. Incorrect target weight with respect to selected capsule size 2. Improper slug formation due to incorrect setting parameters 3. Insufficient binding selected capsule size 4. Poor flow of product Remedies1. Check for the variation in physical parameters (Tapped density, moisture content, particle size distribution & Flow 2. Check for correct parameters setting 3. If a proper slug is not formed, part of the powder could be lost before delivery to the capsule 4. Poor flow of the powder in the dosing disc will result in insufficient powder flowing in the disc cavity properties of the formulation ) Causes Wrong selection of dosing disc thicknessIncorrect gap between dosing disc and supporting padTamping pin and body bush Dosing disc and wiper block Dosing disc and body bush Remedies: Kindly select the proper dosing disc for filling of powder fully onto the capsule shellCorrect the Gap Between:dosing disc and supporting pad: NMT 0.1 mm Tamping pin and body bush: maintained at 0.2 to 0.4 mm Dosing disc and wiper block: maintained at 0.8 to 1.0 mm CausesRemedies1. Excess joined length 2. Improper setting of the closing plate 3. Damage the rubber sheet of the closing plate 4. Incorrect setting of the closing plate Remedies: 1. Check for the standard locking length 2. Check for the gap between the closing unit rubber sheet and capsules. The distance between the two points should be between 0.5 and 0.8 mm. 3. Wear off of capsule closing unit rubber sheet, especially at the point where capsule strikes the sheet would lead to this problem. Replace it with a new one 4. The flap should be visually parallel to the cap bush lock plate. Check to ensure that capsules are hitting the center of the rubber sheet and not the edge. If this were the case, the capsule would fall off the edge and fail to lock properly. Deliquescent / Hygroscopic powders Adsorbent [magnesium carbonate, heavy / light magnesium oxide]A small dose of drug Remedy-Addition of inert powder.Incompatibilities of materials -Use of two capsules - small in largeLack of adhesiveness difficult to fill by punch method-Moistened with alcohol, granules reduced to powders. Other inquiries Related to Capsule filling Problems: Problems in capsule filling and remedies pdf Capsules defects and remedies Capsules defects Capsule defects with images Telescoping capsule defect Which of the following is not the defects of hard gelatin capsule shells Naresh Bhakar is the Founder and Author at Pharmaquaddu.com, bringing his extensive expertise in the field of pharmaceuticals to readers worldwide. He has experience in Pharma manufacturing and has worked with top Pharmaceuticals. He has rich knowledge and provides valuable insights and data through his articles and content on Pharmaquaddu.com. For further inquiries or collaborations, please don't hesitate to reach out via email at [email protected]. Capsules are solid dosage forms in which medicine or a combination of drugs, with or without excipients, is enclosed in Hard Gelatin Capsule Shells, soft, soluble gelatin shells, or hard or soft shells of any other acceptable material, in a variety of shapes and capacities. Normally, they are meant for oral consumption and contain a single dose of active ingredient(s). But capsules must be free from manufacturing defects during the manufacturing process. During manufacturing, capsules may get different types of defects that can be identified at the same time. Capsule Defects and Remedies are provided below to remove such types of defects. Loss of cap during transfer / Misalignment of cap and body bushDents and pinholes (on tips)/Cracks in CapsulesTelescopic CapsulesDusty CapsulesEmpty CapsulesDamaged bandThe capsule does not enter the rectifier blockCapsule getting damaged during loadingCapsule non-separationTarget weight not achievedWeight variationCapsule lock length variation Details of Capsule filling Problems and Solutions are Provided Below in this entire article. Causes: High vacuumRemedies: Reduce vacuum but make sure that it is not so low that capsule separation is not observedKindly check the alignment of the cap and body bush visually to remove the Misalignment of the Causes: Excess closing/lock length setting during the encapsulation process, excessive closing pressure, over-filling of capsules, incorrect pin size or pin configuration, and improper storage conditions (moisture).Remedies: Ensure the correct size disc is used and also ensure the correct amount of dose is filled in the capsule Causes: Improper capacity pump 2. Leakage through filters 3. Cap body bush misalignment 4. Worn out bushes 5. Loss of spring tension at the top slide Remedies1. Proper capacity pump 2. In case of vacuum drops kindly check the filters on the vacuum pump. Cleaned and/or replace if required 3. A misalignment of cap and body bush can cause non-separation 4. If non-separation occurs in specific bushes and cleaning does not help, replace these bushes with a new one 5. Poor spring tension at the top slide probably caused by pin results in improper closing of cap/body bush holder plate. Replace it Causes1. Incorrect target weight with respect to selected capsule size 2. Improper slug formation due to incorrect setting parameters 3. Insufficient binding selected capsule size 4. Poor flow of product Remedies1. Check for the variation in physical parameters (Tapped density, moisture content, particle size distribution & Flow 2. Check for correct parameters setting 3. If a proper slug is not formed, part of the powder could be lost before delivery to the capsule 4. Poor flow of the powder in the dosing disc will result in insufficient powder flowing in the disc cavity properties of the formulation ) Causes Wrong selection of dosing disc thicknessIncorrect gap between dosing disc and supporting padTamping pin and body bush Dosing disc and wiper block Dosing disc and body bush Remedies: Kindly select the proper dosing disc for filling of powder fully onto the capsule shellCorrect the Gap Between:dosing disc and supporting pad: NMT 0.1 mm Tamping pin and body bush: maintained at 0.2 to 0.4 mm Dosing disc and wiper block: maintained at 0.8 to 1.0 mm CausesRemedies1. Excess joined length 2. Improper setting of the closing plate 3. Damage the rubber sheet of the closing plate 4. Incorrect setting of the closing plate Remedies: 1. Check for the standard locking length 2. Check for the gap between the closing unit rubber sheet and capsules. The distance between the two points should be between 0.5 and 0.8 mm. 3. Wear off of capsule closing unit rubber sheet, especially at the point where capsule strikes the sheet would lead to this problem. Replace it with a new one 4. The flap should be visually parallel to the cap bush lock plate. Check to ensure that capsules are hitting the center of the rubber sheet and not the edge. If this

