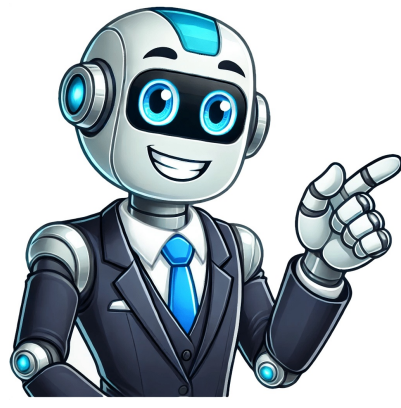


Click to verify

































[illegible]



sounds. If it is not maintained then there is potential for sediment build-up. The knocking sound occurs when water is trapped between the sediment and the heating element. However, if your tank is maintained and flushed out, you should be able to avoid this build-up of sediment. Brown water Similarly to the peculiar sounds, if the hot water runs brown or discoloured it could imply that there is a build-up of sediment or that there is rust in the immersion heater tank. If the tank has serious erosion and rust it might mean that the immersion heater needs to be replaced. If you detect any of the above warning signs, it is worthwhile reaching out to your plumber to err on the side of caution. It is recommended to conduct your own general maintenance examination every six months and if there is anything that doesn't seem quite right, it is worth contacting a plumber. Who fixes immersion heaters? Generally, a plumber can resolve the majority of issues with immersion heaters, especially those who are electrically qualified. On occasion you may need an electrician and plumber, however, the first point of call would usually be your plumber. Depending on the problem and your location, the costs will completely vary. However, it is always worth using a fully qualified and trained Gas Safe registered heating engineer if you have a gas boiler. They will also be able to tell you whether or not an electrician would be required for the job. How long do immersion heaters last? Immersion heaters are designed to last a long time. However, as with anything, they are susceptible to wear and tear. Naturally, the more you use your immersion heater the more wear it will endure. For this reason, immersion heaters are ideal for second homes. Nevertheless, most households will use their immersion heater daily, so with this in mind, there are a few things that you can do to support longevity for your immersion heater. Invest in annual maintenance - During these annual maintenance checks your immersion heater can be flushed and drained. This helps to remove and reduce the levels of sediment build up and rust within the immersion heater. This is also the perfect opportunity to have a professional plumber cast their eye over the full device, to make sure that it doesn't have any other faults.Observance - This might seem obvious, but it is certainly important to remain observant of your immersion heater. If there are any peculiar sounds or leaks, then call your plumber immediately. Trust your own judgement when something seems slightly off. How to fit an immersion heater? When fitting an immersion heater, you should think about the price of immersion heaters and if you're replacing it the costs involved then. Here's how to fit an immersion heater: Check that everything is turned off, including the power.Wrap your immersion heater around the water tank.Remember to insert the fibre seal before thoroughly flushing the immersion heater into its slot. To ensure a tight seal, use a jointing paste.Install your immersion heater. You have the option of connecting it to your ring main or a radial circuit. Follow the wire installation instructions in the product documentation and ensure that all electrical connections are tight.Always follow the rules and regulations for electrical work in the UK, or engage a local electrician to do it for you.Set the temperature you want Immersion heater or new gas boiler? So there you have it. When it comes to an immersion heater, it really does depend on your own household needs. For some flats, second homes, and those that live more remotely, immersion heaters can be a great option. However, they are a more costly way to supply hot water to your home on the grounds that they run on electricity. Hopefully, you can use this article for guidance to weigh up whether or not an immersion heater would be the best solution for your home and your needs or whether working out the price of a new boiler is worth it in the long run. If you're looking for someone to install a new boiler, you can simply use our online boiler quote calculator tool and get a fixed price quote in under 20 seconds for an energy-efficient boiler perfect for your home. FAQ What is a small immersion heater? A small immersion heater is just a tinier electric heating element that is placed in the liquid being heated. It is less expensive, more effective, smaller, and easier to transport to the area you need it most—and it heats you just as well—than a conventional space heater. Is a new heater worth it? Yes, but first consider your alternative heating options. Although new heaters are expensive, running expenses will be lower since they are more efficient than older models in a variety of ways. The effectiveness of an old heater may have been impacted by the heating core's surrounding insulation degrading over time. But we advise looking at our new boilers and replacement service which you can find out more about here if you want a device that heats your house the most effective. Get an online fixed price in 20 seconds: What kind of fuel does your boiler use? Skip to content